

# High School for Recording Arts

St. Paul, MN, Lighting Plan, November 19, 2002

## Linear Steel Pendants

12 foot direct/indirect, (three four-foot fixtures ganged together), two T-8 lamps each four-foot section, minimum 82 CRI. Alera Solaris SLS-2T8, white housing, parabolic louver, 60/40 distribution (60% uplight and 40% downlight). Standard aircraft cable mount, 24" from top of fixture to underside of wood joists. Do not trim end of cable, allowing for future height adjustment. Provide alternate cost for 98 CRI Phillips F32T8/TL950 lamp.

## Circular Alum. Pendant

Prescolite LT540CIEB-LC, direct/indirect, 14" diameter, cable mount, specular parabolic lens, 40W T5 circular lamp.

## Accent Lighting

12 ft. tracks and 100 watt incandescent spots, black finish preferred.

## Stage Lighting

Theater lights by owner. G.C. to provide suspended pipe for mounting and four 240 V circuits.

## Sports Lighting

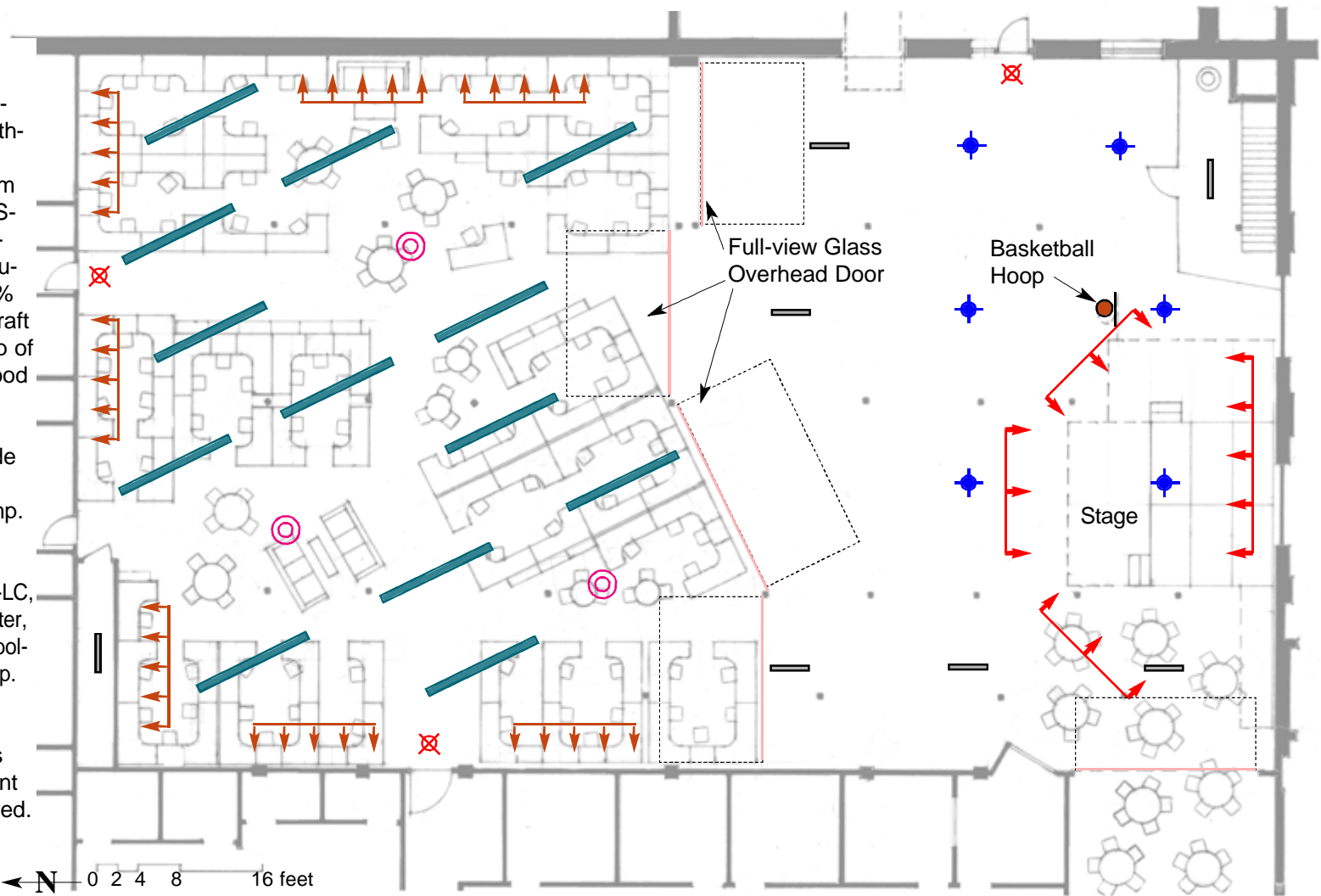
Low-bay 100 W Metal Halide surface mount with protective grille; provide catalogue reference for Design Architect approval.

## General Lighting

Existing 4 ft. T12 pendants

## Exit Lighting

LED Exit light



**Randall Fielding, AIA, Architect & Planner**

4937 Morgan Ave. South, Minneapolis, MN 55409

612-925-6897, Fax: 612-922-6631

[www.designshare.com/fielding](http://www.designshare.com/fielding)

[fielding@designshare.com](mailto:fielding@designshare.com)